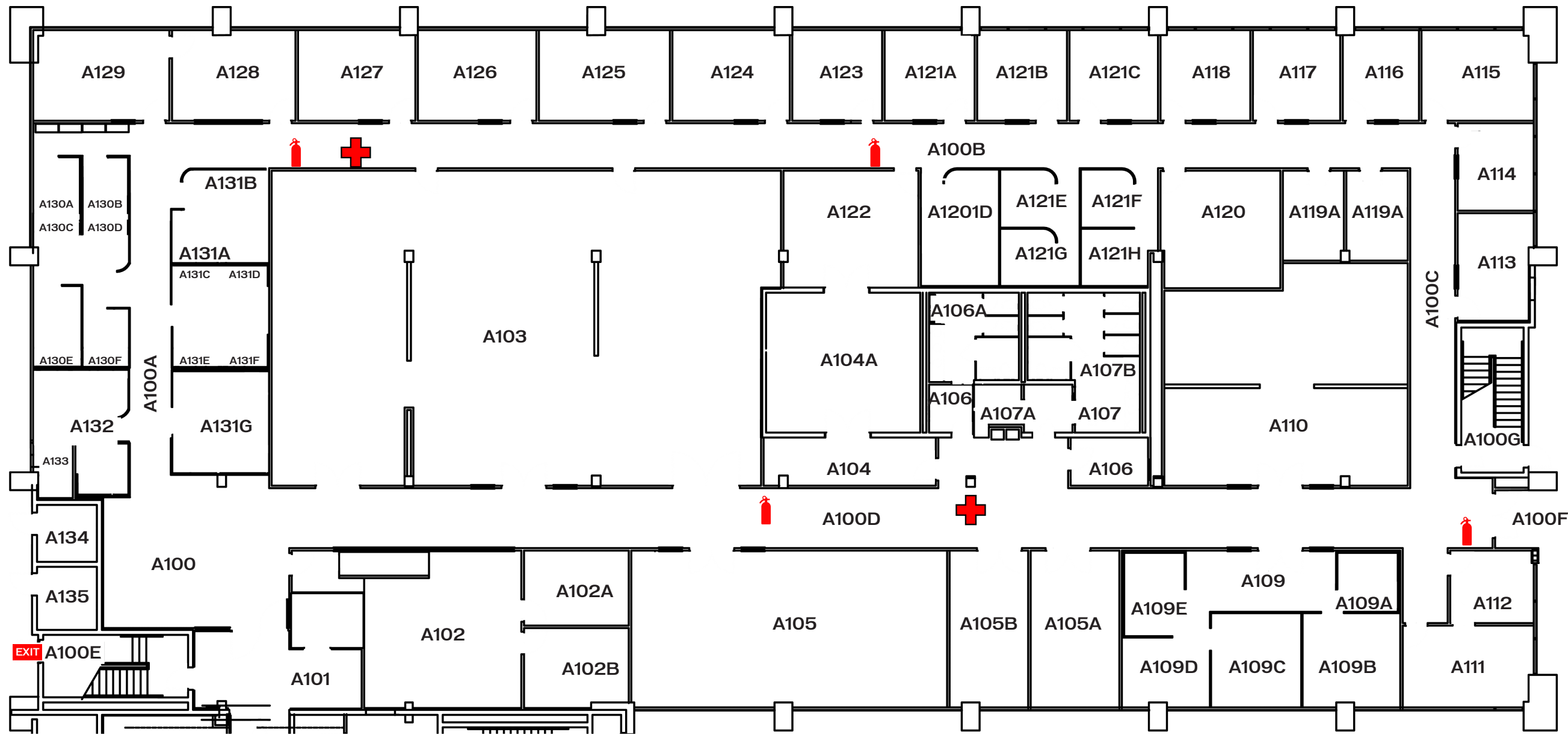









# GENERAL SCIENCES BUILDING FIRST FLOOR A



## LEGEND

-  FIRE EXTINGUISHER
-  EMERGENCY EYEWASH STATION
-  FIRST AID
-  SPILL KITS
-  AUTOMATED EXTERNAL DEFIBRILLATOR
-  EXITS
-  EVACUATION ROUTE

## EMERGENCY NUMBERS

**FIRE OR MEDICAL:**  
**911**  
**FSU POLICE DEPARTMENT:**  
**644-1234**  
**NHMFL SAFETY**  
**644-0233 OR 644-6955**  
**FACILITIES INFO**  
**644-3596**