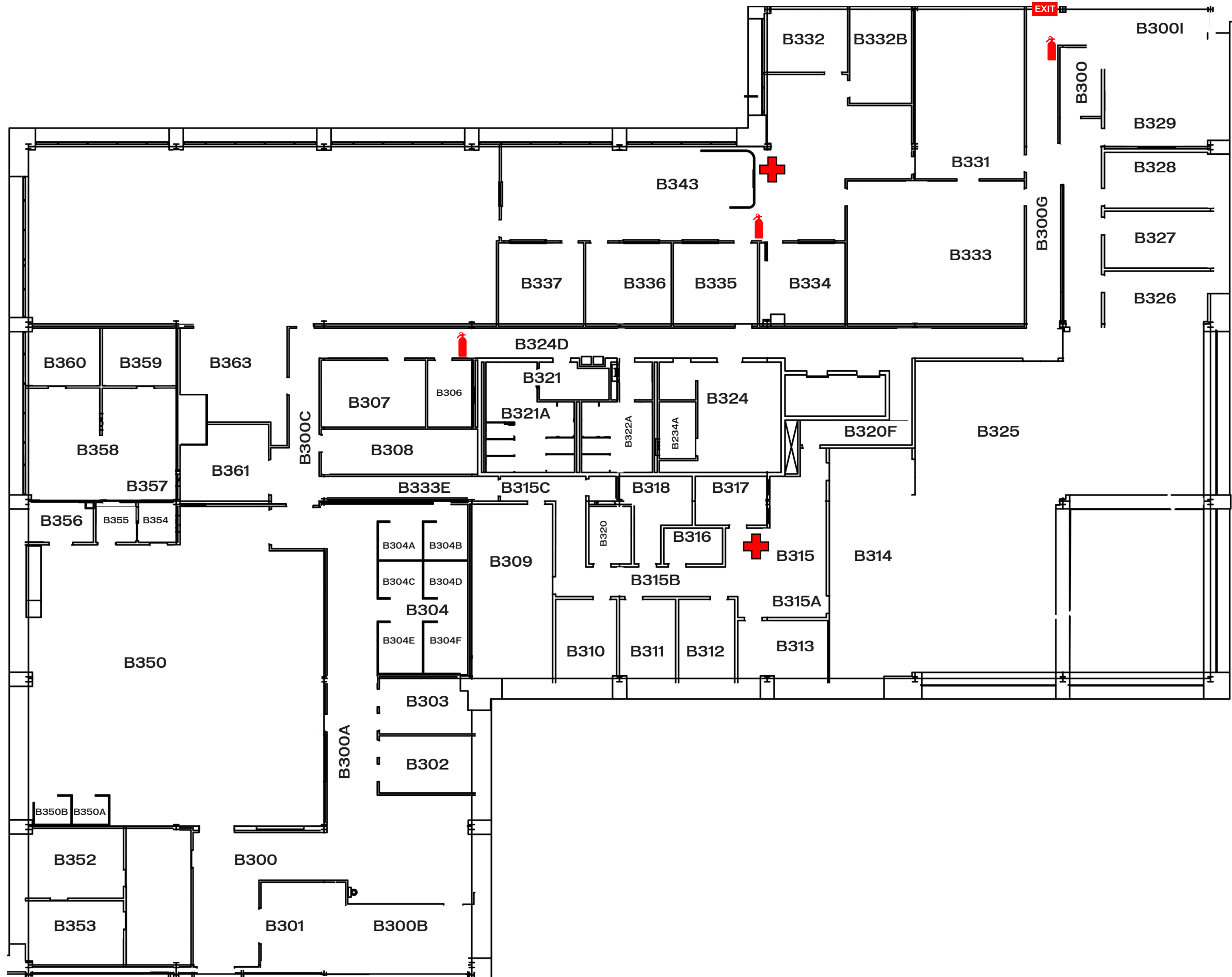









GENERAL SCIENCES BUILDING - THIRD FLOOR B



LEGEND

-  FIRE EXTINGUISHER
-  EMERGENCY EYEWASH STATION
-  FIRST AID
-  SPILL KITS
-  AUTOMATED EXTERNAL DEFIBRILLATOR
-  EXITS
-  EVACUATION ROUTE

EMERGENCY NUMBERS

FIRE OR MEDICAL:
911

FSU POLICE DEPARTMENT:
644-1234

NHMFL SAFETY
644-0233 OR 644-6955

FACILITIES INFO
644-3596