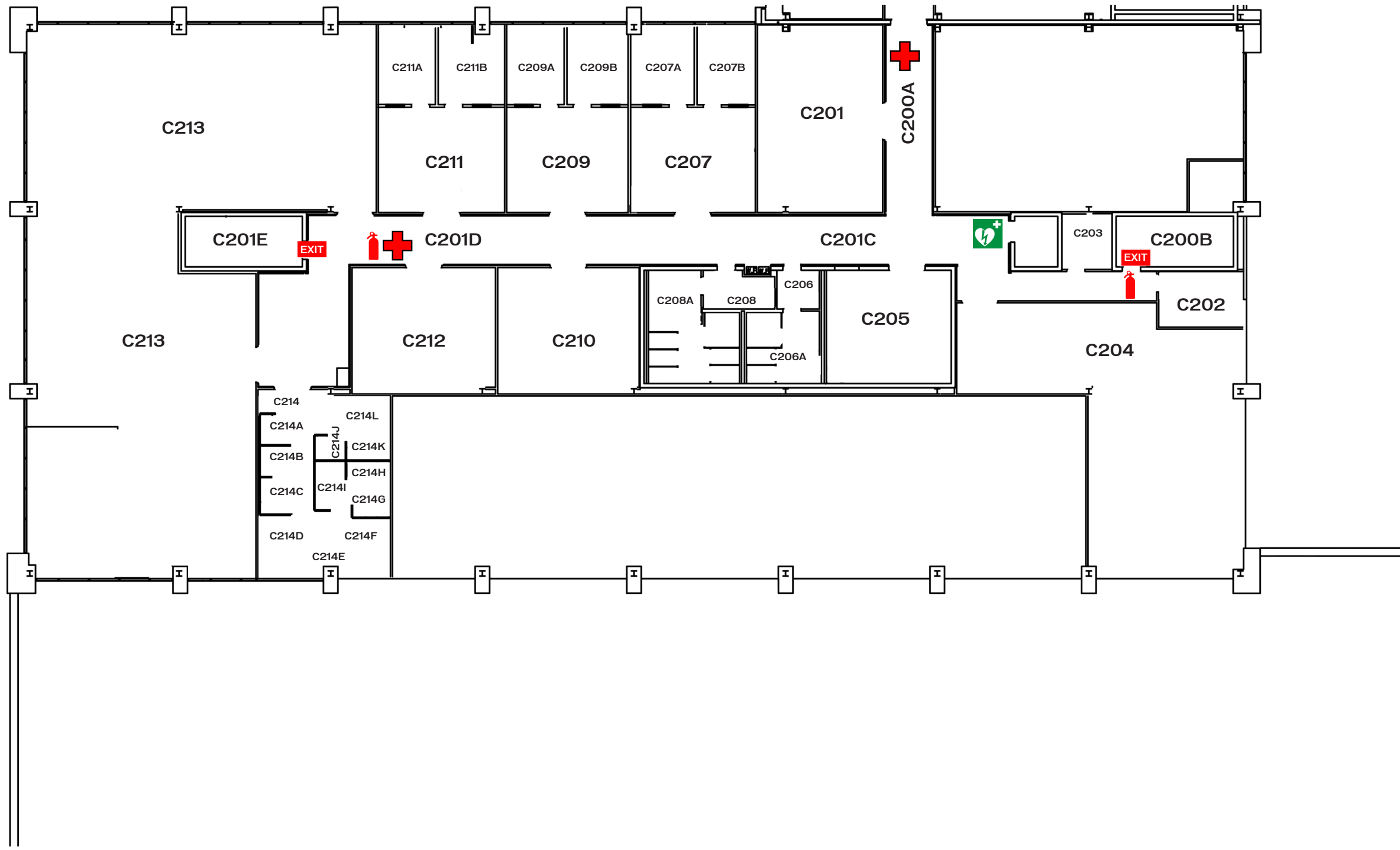









# GENERAL SCIENCES BUILDING - SECOND FLOOR C



## LEGEND

-  FIRE EXTINGUISHER
-  EMERGENCY EYEWASH STATION
-  FIRST AID
-  SPILL KITS
-  AUTOMATED EXTERNAL DEFIBRILLATOR
-  EXIT EXITS
-  EVACUATION ROUTE

## EMERGENCY NUMBERS

**FIRE OR MEDICAL:**  
911

**FSU POLICE DEPARTMENT:**  
644-1234

**NHMFL SAFETY**  
644-0233 OR 644-6955

**FACILITIES INFO**  
644-3596